

BIOMIME™ MORPH TECHNICAL SPECIFICATIONS

STENT

Stent Material	: Cobalt Chromium L605
Strut Thickness	: 65 µm (0.065 mm or 0.0026")
Stent Diameters (mm)	: 2.75-2.25, 3.00-2.50, 3.50-3.00
Stent Lengths (mm)	: 30, 40, 50, 60
Mean Recoil	: 3%
Mean Foreshortening	: 0.29%

DRUG / POLYMER

Drug	: Sirolimus
Equivalent Drug Dose	: 1.25 µg / mm ²
Polymer	: Biodegradable and Biocompatible

DELIVERY SYSTEM

Delivery System	: Rapid Exchange
Stent Diameter	: Crossing Profile
mm	mm / inches
2.75-2.25	0.93 / 0.037"
3.00-2.50	0.99 / 0.039"
3.50-3.00	1.03 / 0.040"
Nominal Pressure (NP)	: 9 atm
Rated Burst Pressure (RBP)	: 14 atm
Balloon Overhang	: < 0.5 mm
Shaft Outer Diameter	: Proximal 2.13 F, Distal 2.7 F
Radiopaque Markers	: 2 - Platinum / Iridium
Usable Catheter Length	: 142 cm
Guide Catheter Compatibility	: 5 F (Min. I. D. 1.42 mm / 0.056")
Max. Guidewire	: 0.014" (0.36 mm)

BIOMIME™ MORPH ORDERING INFORMATION

Diameters	Lengths			
	30 mm	40 mm	50 mm	60 mm
Proximal - Distal				
2.75-2.25 mm	BIM27522530	BIM27522540	BIM27522550	BIM27522560
3.00-2.50 mm	BIM30025030	BIM30025040	BIM30025050	BIM30025060
3.50-3.00 mm	BIM35030030	BIM35030040	BIM35030050	BIM35030060

Meril

Meril Life Sciences Pvt. Ltd.
Survey No. 135/139, Bilakhia House,
Muktanand Marg, Chala,
Vapi 396 191,
Gujarat, India.
T +91 260 305 2100
F +91 260 305 2125

Meril, Inc.
116, Village Boulevard, Suite 200,
Princeton, NJ 08540, USA.
T +1 609 951 2287
F +1 609 520 1702

Meril South America
Doc Med LTDA
Al. dos Tupiniquins,
1079 - Cep: 04077-003 - Moema,
Sao Paulo, Brazil.
T +55 11 3624 5935
F +55 11 3624 5936

Meril GmbH.
Bornheimer Strasse 135-137,
D-53119 Bonn,
Germany.
T +49 228 7100 4000
F +49 228 7100 4001

Meril Tibbi Cihazlar
İmalat Ve Ticaret A. Ş.
6. Mimar sinan Mah.,
Çavusbasi Cad. Özde Sok.
Aydin Eksi Is Merkezi Kat:1
Cekmekoy / Istanbul, Turkey.
T +90 53 2272 5172

E askinfo@merilife.com
W www.merilife.com

BioMime™ Morph is not approved
by USFDA and not available for sale in USA.
BioMime™ Morph is registered trademark
of Meril Life Sciences Pvt. Ltd.

BIM/BROCHURE/001/MLS/20151209/IND

biomime™ morph
Sirolimus Eluting Coronary Stent System

Meril



biomime™ morph
Sirolimus Eluting Coronary Stent System

biomime™ morph

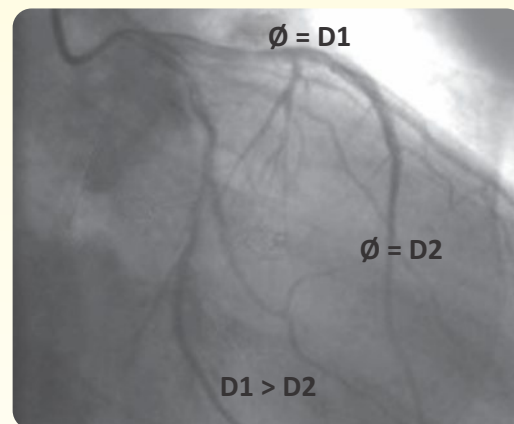
Sirolimus Eluting Coronary Stent System

Morphs so well, you can tell.



World's 1st Tapered Drug Eluting Stent System

This angio is routine...



& now, so is its customized treatment...

- A DES that tapers as per vessel anatomy
- Avoids overlapping - thus fracture & restenosis
- Possible to treat long diffused lesions with a single stent - one and done
- Reduced procedural time
- Prevents over radiation and contrast
- Saves cost - less \$ than multiple tandem stents

